



HEAVY-LIFT UNMANNED AERIAL VEHICLE SYSTEM

TITAN 33

DESIGNED FOR AERIAL TRANSPORTATION OF HEAVY CARGO.

APPLICATION AREAS



TITAN 33 ENABLES A WIDE RANGE OF LOGISTICS AND TRANSPORTATION MISSIONS:

- Rescue and emergency response operations
- Forest fire monitoring and suppression
- Humanitarian aid delivery (medicine, drinking water, food, clothing)
- Cargo and medical equipment delivery to hard-to-reach areas affected by landslides, earthquakes, flooding, and other natural disasters

Heavy-lift aerial platform built for complex operational environments.

TACTICAL & TECHNICAL CHARACTERISTICS

- Airframe Material: Composite Carbon Fiber + Aviation Aluminum
- Deployed Wheelbase: 4800 mm
- Folding Dimensions: 2500 × 2500 × 1200 mm
- Whole Machine Weight (including battery): 245 kg
- Gross Weight: 400 kg
- Packing Size: 2.6 × 2.6 × 1.5 m
- Maximum Take-off Weight: 640 kg
- Rated Take-off Weight: 512 kg
- Maximum Effective Payload: 390 kg (Extreme Mode)

- Rated Effective Payload: 300 kg
- Maximum Flight Speed:
 - S Mode: 16 m/s
 - M Mode: 14 m/s
 - P Mode: 12 m/s
- Endurance:
 - ≥ 25 min with 300 kg payload
 - ≥ 60 min with 120 kg payload
- Range with 120 kg payload: 50 km
- Battery Storage Capacity: 32 kWh
- Hover Precision: 0.1 m



PERFORMANCE & ENVIRONMENT



- Maximum Wind Resistance: \geq Level 6
- (Instantaneous gusts \geq Level 8)
- Emergency Obstacle Avoidance: Radar + Vision + Electronic Fence
- Integrated Image & Data Control Range: 30 km (open area)
- Gimbal Rotation: 360°
- Camera Resolution: 1080P
- Operational Cruise Altitude: 20–3000 m
- Multi-purpose Interface:
 - Firefighting / Transport / Lifting Support
 - Operating Temperature: -20°C to $+65^\circ\text{C}$
 - Protection Rating: IP68

BATTERY PARAMETERS



CHARGING INTERFACE: DUAL-CHANNEL

- 277 AH
- 72 V
- WEIGHT: 80 KG

CHARGER SPECIFICATIONS:

- Input Voltage: 110–220 V
- Charging Power: 3000 W
- Discharging Power: 80 W
- Charging Current: 35 A

FLIGHT CONTROL CAPABILITIES

- GPS waypoint mission planning
- Autonomous flight capability with manual override
- Obstacle detection and terrain-following capability
- Automatic Return-to-Home (RTH) in case of:
 - Low battery
 - Signal loss

ASIIC

Aerospace Innovation Industrial Center

ADDITIONAL ACCESSORIES (OPTIONAL)



30× ZOOM CAMERA

Optical zoom lens for long-distance image capture
Image stabilization support



ZT30 CAMERA SYSTEM

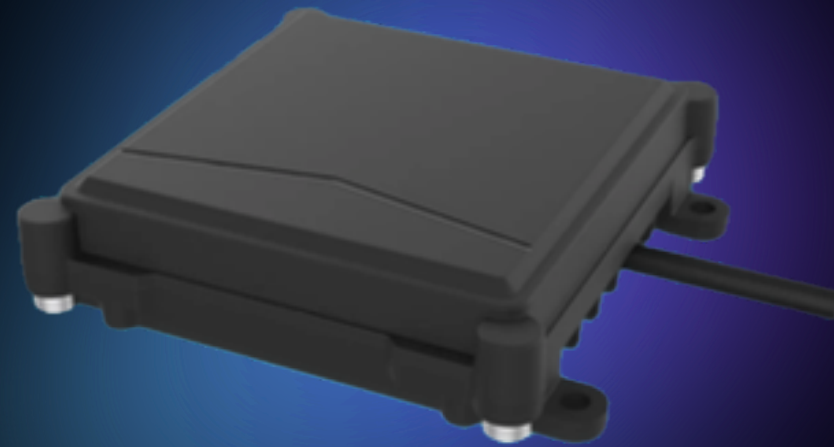
Includes:

- 30x optical zoom camera
- 640 × 512 thermal imaging camera
- 2K wide-angle camera
- Laser ranging module

ASIIC

Aerospace Innovation Industrial Center

ADDITIONAL ACCESSORIES (OPTIONAL)



MILLIMETER-WAVE OBSTACLE AVOIDANCE RADAR

Supports safe navigation in complex environments



ELECTRIC CONTROL CABLE WINCH

Product Size: 31 × 11 × 11 cm

Weight: 7.5 kg

Operating Temperature: -50°C to +65°C

Maximum Vertical Lifting Capacity: 320 kg

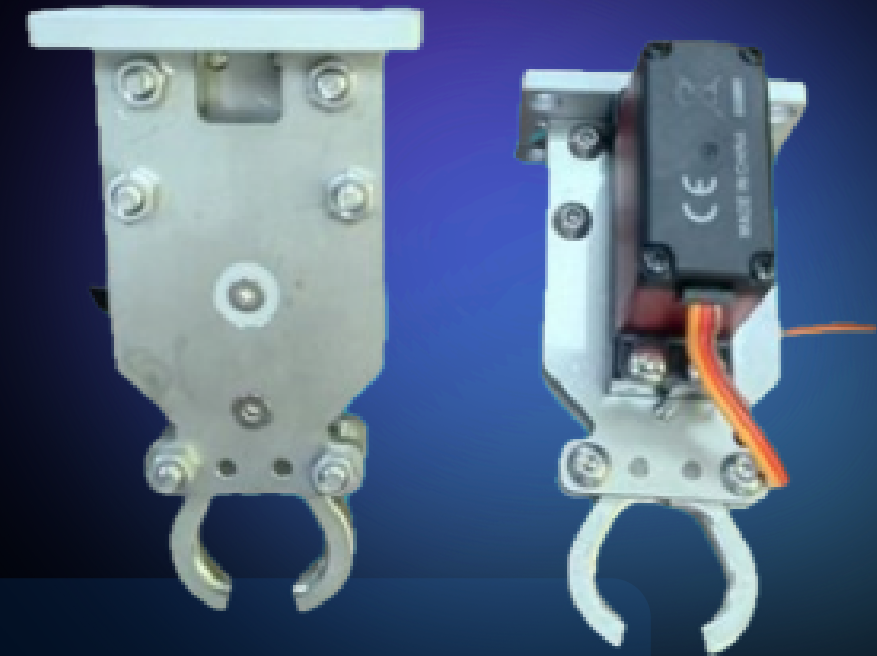
Remote Control Operation

Steel Cable Specification: 5 mm × 15 m

ADDITIONAL ACCESSORIES (OPTIONAL)



**SEARCHLIGHT
+
LOUDSPEAKER**



500 KG THROWER

Remote-controlled material release
system

CONTACT US

(+44) 7745 665430

INFO@ASIICMINERALS.COM

ASIICMINERALS.COM

The Wheelhouse
81 Saint Clement's Street
Oxford OX4 1AW, England, United Kingdom